



Sustainability and design centre stage

At InOut | The Hospitality Community, the outdoor hospitality sector took the spotlight with innovative mobile homes, glamping tents, and wellness solutions. Sustainability, energy efficiency and refined design defined this year's vision for the future of open-air tourism

Words Antonio Mazzucchelli and Paolo Galvani - photo Enrico Bona

This report explores the most significant innovations for campsites and glamping unveiled at InOut | The Hospitality Community 2025, held concurrently with TTG Travel Experience at the Rimini Exhibition Centre. Organised by Italian Exhibition Group, the twin events once again confirmed their growing strength as Italy's leading business platform for tourism and hospitality. Attendance rose by 3% compared to 2024, continuing a steady upward trend in visitor quality and exhibitor satis-

faction. More than 2,700 exhibiting brands, 1,000 buyers from 75 countries, and over 19,500 business meetings testified to a sector in full momentum.

"Tourism is both an economic and social driver," said Tourism Minister Daniela Santanchè during the opening ceremony, underlining that the industry now accounts for 13% of Italy's GDP and will continue to expand significantly in the coming decade. Within this dynamic framework, InOut stood out as a key reference point for pro-

fessionals in open-air hospitality. Across its areas dedicated to design, furnishing, and outdoor living, the event showcased the latest developments in mobile homes, glamping tents, and wellness-oriented accommodation.

The 2025 edition clearly reflected a growing focus on sustainability, technology integration, and guest experience – trends that will continue to shape the future of tourism when the event returns to Rimini from 14 to 16 October 2026.



VPF

VPF presented two mobile home models at InOut: the compact Easy 06, essential and well-designed, created for campsites and holiday villages seeking a reliable, affordable, and ready-to-use solution; and the Evolution, an entirely new concept that launches a fresh living line. This model stands out for its integrated 35 m² patio and refined details such as sliding glass doors and natural wood finishes combined with soft green tones. With the Evolution, VPF raises the bar for comfort and design, offering bright interiors, modern lines, and a welcoming atmosphere. Aimed at campsites and resorts wishing to expand their offer with a premium solution, it perfectly combines aesthetics, functionality, and living comfort. Based in San Vito dei Normanni (Brindisi, Italy), VPF is an Italian company certified ISO 9001, 14001 and 4500.





Outstanding

Outstanding, the Dutch company active since 2009 and a pioneer in the European glamping market, has introduced the AN3 Seas-on, a lodge designed for 2 to 4 guests with a total floor area of 40 m² and an interior space of 5 x 5 meters. Part of the Seas-on line, it is built for true four-season use thanks to an advanced insulation system using PIR panels (R-value 3.15, average efficiency 3.0) integrated into both walls and roof. These ensure stable indoor comfort and low energy consumption: only 409 W are needed to maintain 20 °C with 15 °C outside, and 2,455 W even at -10 °C. The double-layer insulated roof and PVC and technical canvas cladding provide full weather protection.

IMH

Italica Mobil Home builds modular homes using a steel-frame structure in galvanized steel. The walls, insulated with rock wool, offer high thermal and acoustic performance comparable to masonry constructions. The porcelain stoneware flooring ensures durability, while all electrical and plumbing systems are integrated within the structure, optimizing space and efficiency. Exterior finishes can be customized, and the patented chassis with removable wheels allows mobility and flexibility. An interior height of 2.70 m is available upon request to meet full-habitation standards.





BHI

BHI, the Italian branch of the French company Bio Habitat (part of the Trigano Group), is one of Europe's leading producers of mobile homes for outdoor tourism, known for combining design, comfort, and attention to detail. The company showcased two models that embody this philosophy: the Key West 2C2B and the Riviera Pacifica 3C2B, part of the new Lounge line. The Key West evokes the refined atmosphere of a contemporary suite, with bright spaces, elegant furnishings, and a balanced use of materials and colors that convey both comfort and intimacy. The Lounge reflects the serene charm of Mediterranean settings. Soft tones, natural textures, and large openings create a seamless connection between indoors and outdoors, encouraging relaxation and social living. Both lines express BHI's vision of the mobile home as more than a vacation retreat – an authentic, welcoming living space in harmony with nature.



Autentic

The Belgian company Autentic, a specialist in high-quality glamping tents, presented a Jack Bell model – a contemporary reinterpretation of the classic safari tent. With an interior space of 20.6 m², it can accommodate up to two double beds. Made from a next-generation acrylic fabric with a 5-year warranty, it ensures exceptional strength, waterproofing, and wind resistance of up to 100 km/h. A technical inner liner allows heating or cooling according to the season, making it suitable for year-round use.



Tipi

Tipi Glamping presented its Aria line, a contemporary reinterpretation of traditional teepees. Built with a wooden base and recycled fabric made from sunshade production scraps, the tents are stain-resistant, waterproof, and eco-friendly — a true example of up-cycling and circular economy. Each tent contains only a bed and is designed for short overnight stays, offering a simple yet immersive experience in nature. Inspired by Native American teepees and classic Canadian tents, they combine essential design, structural strength, and comfort.

DomoViva

The Italian company Edil Euganea presented its DomoViva modular homes, showing how prefabricated housing can evolve. The DomoViva 39 P is a compact unit of about 39 m² (26 m² indoors plus a veranda), delivered fully furnished and ready to use, complete with appliances such as a washing machine, dishwasher, and microwave oven. While it recalls the shape of a container, it is insulated and finished with high-quality materials, offering the comfort of a traditional home in a refined, compact format. It is not on wheels, but can be transported and installed on a concrete base. The concept aims to redefine prefabrication, transforming it from an emergency solution into a luxury, customizable, and sustainable mini home.





Adria

Slovenian company Adria Home, one of Europe's leading manufacturers of mobile homes, has unveiled the Village Green 865 F22 (8.6 x 4.5 m), offering two bedrooms, two bathrooms and four berths (+2 optional). Built using Adria Woodframe technology and eco-friendly materials, it features smart solutions such as home automation systems, a heat pump, integrated fridge, boiler, and sustainable wood cladding. Particular attention has been paid to sustainability, with the introduction of innovative materials such as organoid – made from real dried and pressed flowers – used to cover parts of the interior walls. This model is almost entirely recyclable thanks to a construction approach based on material circularity. The second model showed at InOut was the Adria Home 805 H11, a 36 m² modular home built using Adria Woodframe Technology (51 mm), ensuring excellent thermal performance and structural integrity. The exterior features vertical Thermowood cladding with anthracite metal trims. Technical highlights include optional smart control systems, integrated heat pump, smart climate sensors, built-in dishwasher and fridge, and premium Hansgrohe fittings, all designed for efficient, high-end open-air accommodation.





Juliette

The Italian Juliette presented the Narciso mobile home. The unit measures 6 x 4 meters with an interior height of 2.50 m, featuring ventilated walls up to 95 mm thick made of wood, polysty-

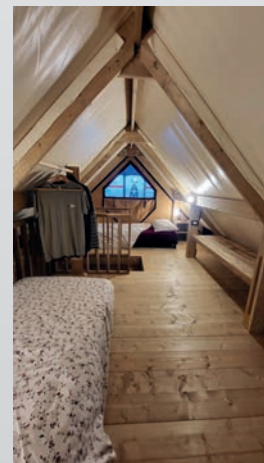


rene, and external cladding in rigid PVC or stone panels. The naturally ventilated roof, available in both double-pitch and single-slope versions, ensures thermal comfort in all seasons. The insulated floor package with double OSB panels and polystyrene, together with central heating and thermostat-controlled electric convectors, makes the home suitable for year-round living. Additional features include PVC double-glazed windows, a hot-dip galvanized steel chassis, and professional-grade PVC flooring.



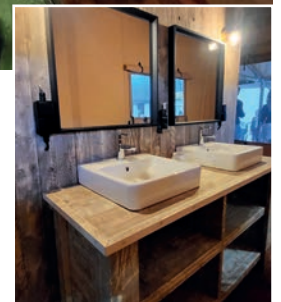
Glant

Glant presented the Cortina model - inspired by the upcoming Winter Olympics and designed for comfort in every season. Covering about 4x6 meters, the tent is ideal for families or couples seeking a cozy and versatile space. The panoramic mezzanine can accommodate extra beds or a lounge area, while the lower level includes a bathroom, living area, and outdoor kitchen.



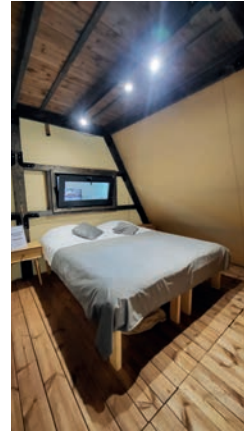
CampSolutions

The Dutch company CampSolutions, based in Twello and active since 2008, presented one of its most distinctive glamping tents, designed to offer a refined and immersive outdoor living experience. Inside, a partition wall separates the bathroom area into two sections: one with double sinks, the other with a freestanding bathtub. The wall can be bypassed from both sides, creating a natural sense of circular movement and spaciousness unusual for a tent. The design combines elegance and practicality, offering guests comfort and intimacy while maintaining an open, airy atmosphere. With a team experienced in developing temporary and luxury camps, CampSolutions continues to innovate in experiential hospitality and glamping design.



Glamhouse

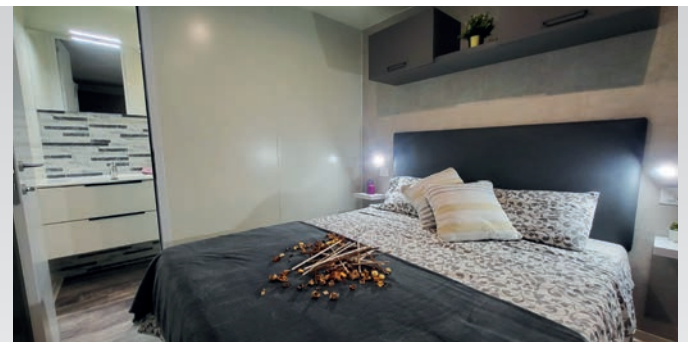
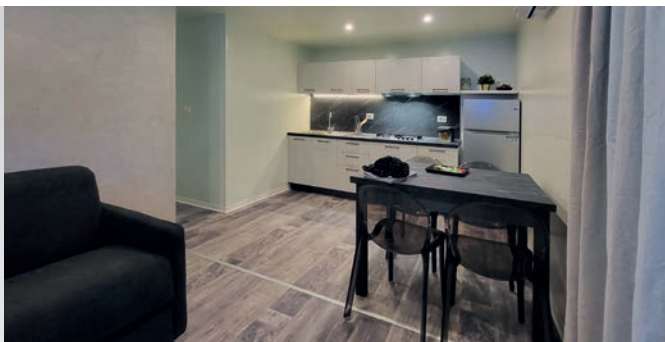
The Latvian company Glamhouse, born from one of the first glamping projects in the Baltics, presented its original Triangle Tent, a distinctive two-storey structure that redefines outdoor living. Designed as a complete glamping unit, the Triangle offers a solid powder-coated metal frame with wooden flooring panels for easy installation and a breathable, waterproof fabric made of high-quality polyacrylonitrile. Resistant to wind, moisture and mildew, it ensures comfort and durability in any season.



Tentourage

The French-Italian company Tentourage, with over ten years of experience in creating tensile structures inspired by Bedouin tents, attended InOut with an information stand. Made

from high-performance materials, the Tentourage stretch tents withstand winds up to 110 km/h and reflect UV rays, ensuring comfort even on the hottest days. Available in various sizes – from 5x6 to 20x30 meters, and modular up to 900 m² – they can be installed on sand, grass, or concrete. Ideal for campsites and holiday villages, they can serve as restaurant terraces, bar canopies, or spacious communal areas designed to enhance outdoor living and shared experiences.



New Mobil Home

The Italian company New Mobil Home presented a new 35 m² mobile home, entirely designed and built in-house with no standard modules. The layout includes two bedrooms, two bathrooms, and a living room with a sofa bed for a total of six sleeping places, while the large integrated veranda is a structural feature rather than an optional add-on. A double panoramic glass wall enhances brightness and continuity between indoor and outdoor spaces, giving the unit a modern, open feel. The exterior walls are finished with anti-mold quartz plaster, ideal for coastal areas, while the interiors are insulated and customizable in colors and finishes, ensuring lasting comfort and durability.

